

# JURISDICTIONAL APPROACHES TO REDUCING DEFORESTATION & PROMOTING SUSTAINABLE LIVELIHOODS

Amy Duchelle – Team Leader & Senior Scientist

Climate Change, Energy and Low Carbon Development

FTA Rubber and Climate Change Workshop, 25<sup>th</sup> June 2020



RESEARCH  
PROGRAM ON  
Forests, Trees  
Agroforestry



# What are jurisdictional approaches?

Government-led, holistic approaches to forest and land use across one or more legally defined territories.



# Study of Jurisdictional Approaches



Earth  
Innovation  
Institute



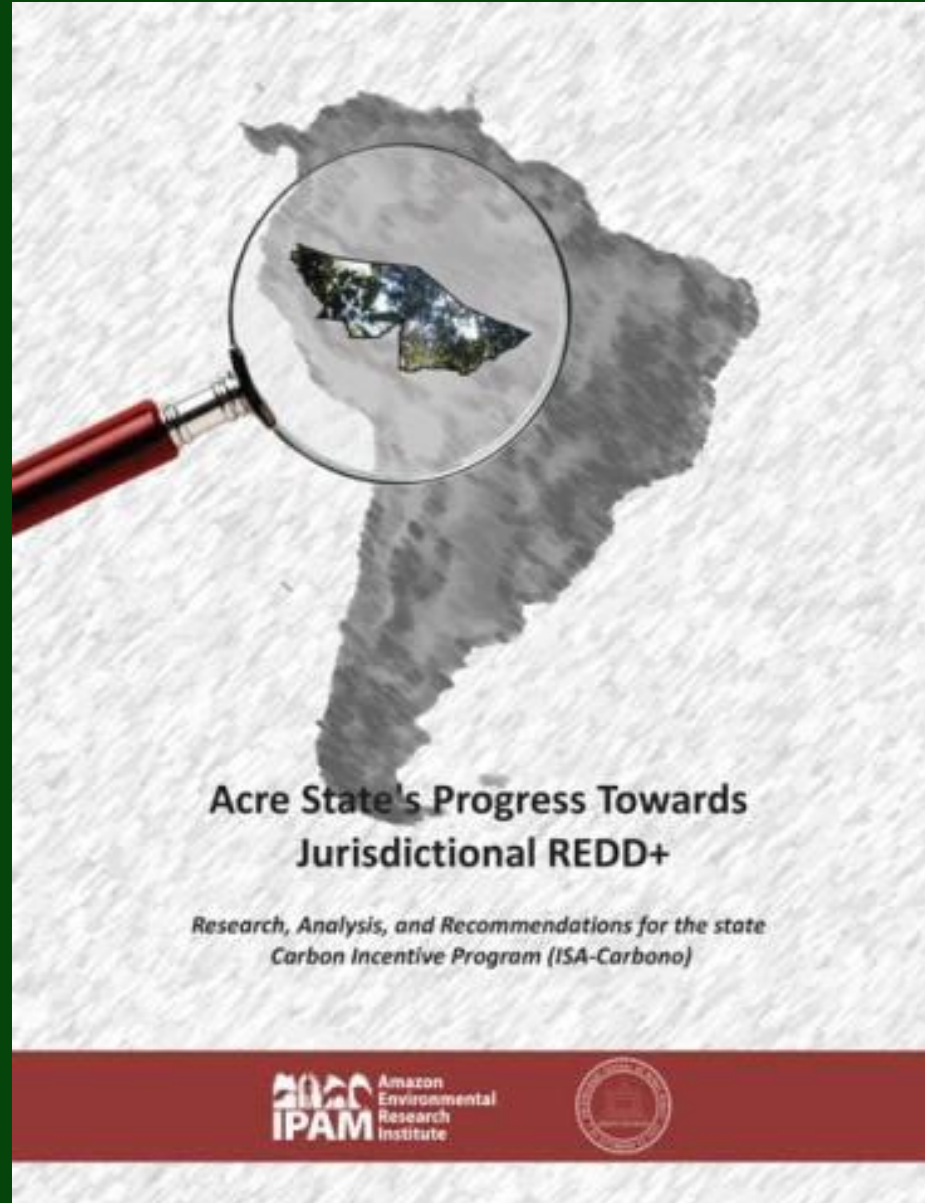
**GCF**  
task force



<https://earthinnovation.org/state-jurisdictional-sustainability/>



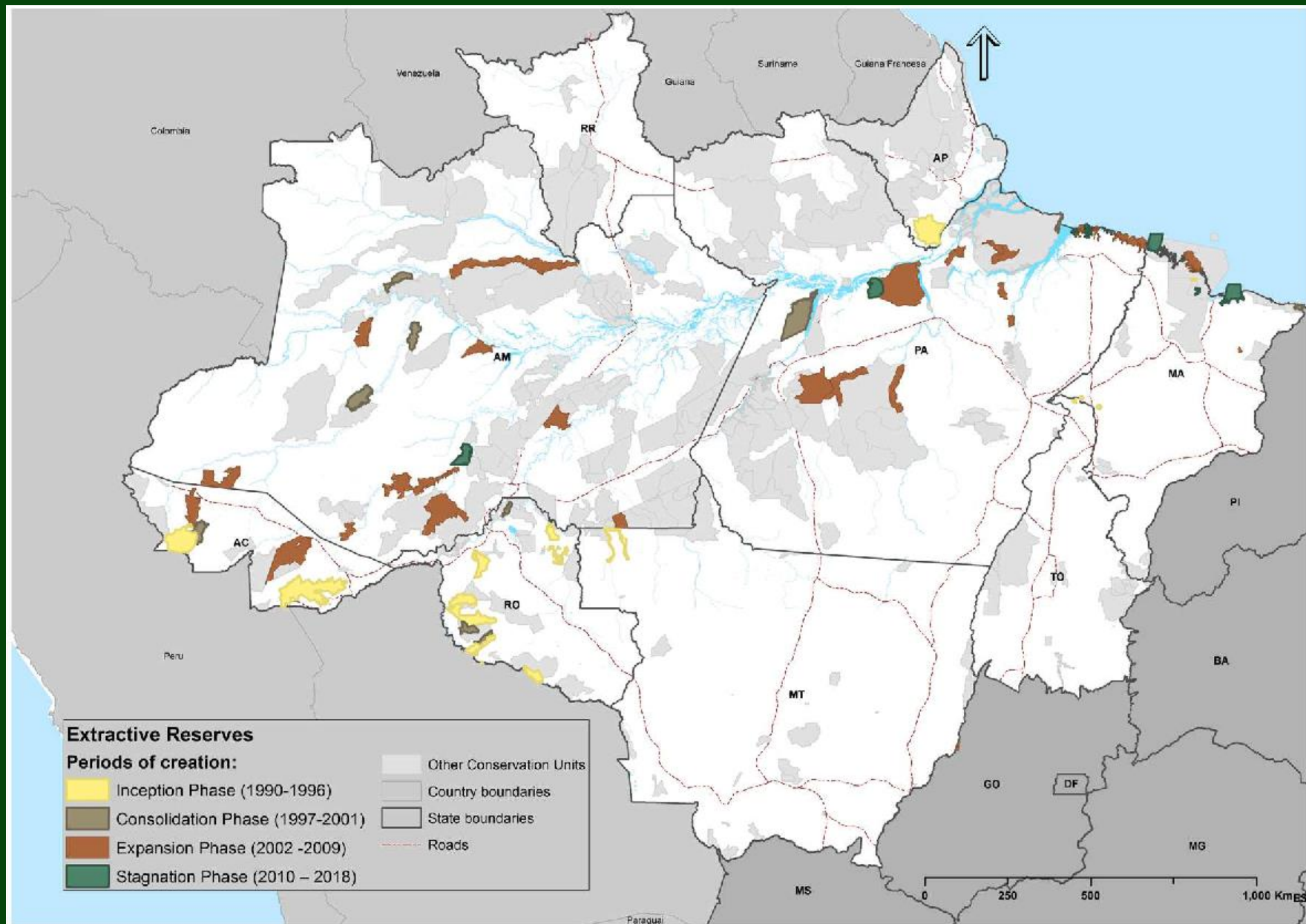
# ACRE, BRAZIL: A Pioneer Jurisdiction

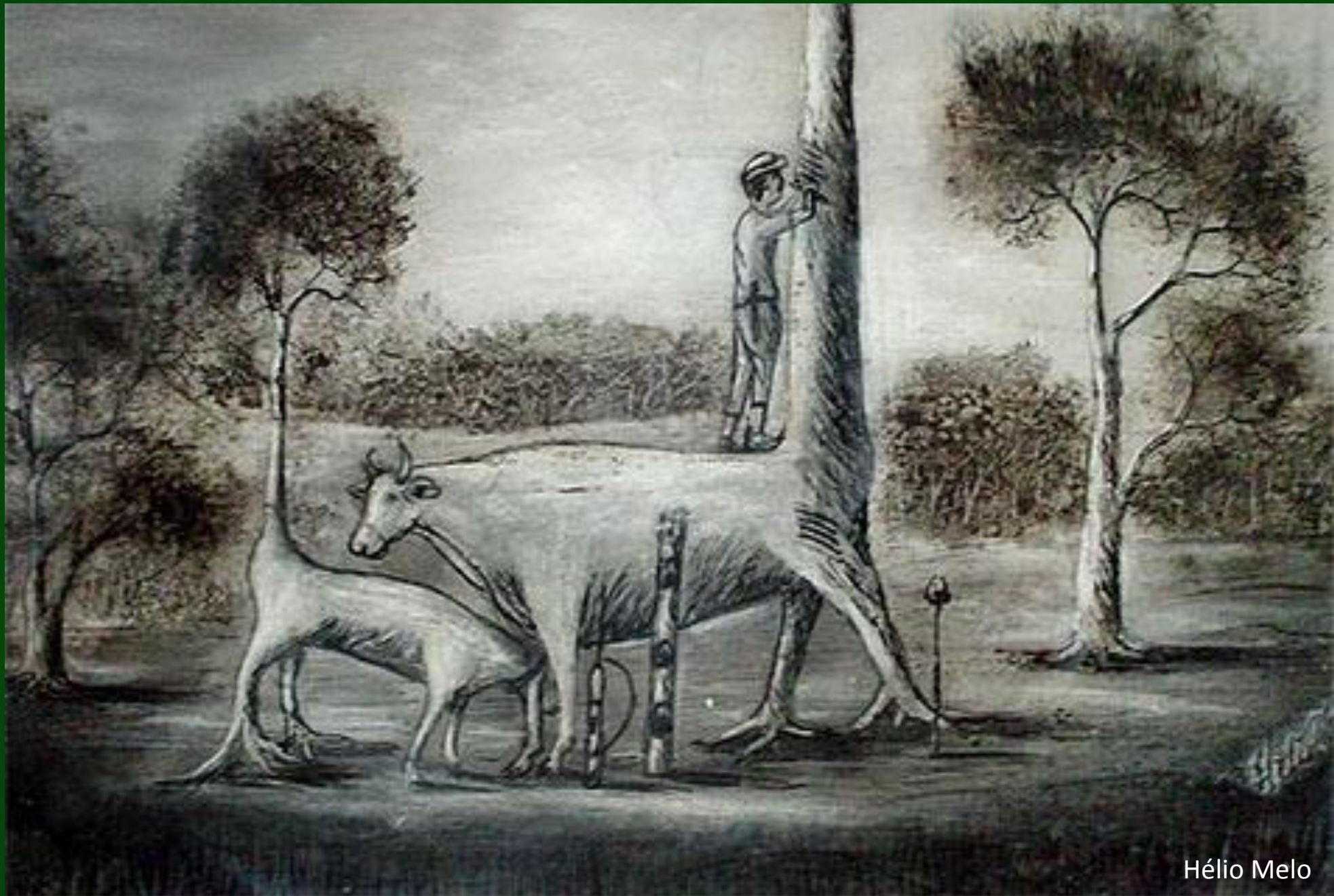




“ No começo pensei que estivesse lutando para salvar seringueiras, depois pensei que estava lutando para salvar a Floresta Amazônica ”







Hélio Melo







## Trees and forests

Tom Phillips in Rio de Janeiro

Wed 9 Apr 2008 01.58 BST



# Brazil builds £10m condom factory to help save rainforest



▲ A man harvests rubber at a rubber plantation in Xapuri. Photograph: Silvia Izquierdo/AP

## Free at Rio Olympics: 9 million forest-friendly condoms

REUTERS

Published Jul 5, 2016, 9:22 am IST

Updated Jul 5, 2016, 9:34 am IST



Committee said about 450,000 of the sustainably-produced condoms will be destined for athletes and staff housed in the Olympic Village.



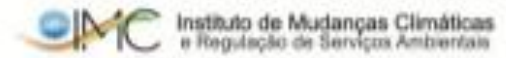
📺 All the condoms to be distributed are produced by Natex, a factory in the western Amazon of Acre, deep in the rainforest near Brazil's border with Bolivia.





# SISA

Sistema Estadual  
de Incentivos aos  
Serviços Ambientais









📌 Pinned Tweet



**EDF California** @EDF\_CA · 15 Nov 2018

California is more intertwined with the Amazon rainforest than you might think. That's why the proposed California Tropical Forest Standard is so important: it could protect the Amazon, its people and our climate. [edf.org/HyE](https://edf.org/HyE)



💬 1

🔄 6

❤️ 7



# FURTHER READING

Duchelle, A.E., M. Greenleaf, D. Mello, M.F. Gebara, T. Melo. 2014. **Acre's State System of Incentives for Environmental Services (SISA), Brazil.** In: Sills, E.O., S.S. Atmadja, C. de Sassi, A.E. Duchelle, D.L. Kweka, I.A.P. Resosudarmo, W. Sunderlin, eds. *REDD+ on the ground: A case book of subnational initiatives across the globe*, pp. 68-85. CIFOR, Bogor, Indonesia. <https://www2.cifor.org/redd-case-book/case-reports/brazil/acres-state-system-incentives-environmental-services-sisa-brazil/>

Schmink, M., A. Duchelle, J. Hoelle, F. Leite, M. Oliveira, J. Vadjunec, J.F. Valentim, R. Wallace. 2014. **Forest citizenship in Acre, Brazil.** In: Katila, P., G. Galloway, W. de Jong, P. Pacheco, G. Mery. *Forests under pressure – local responses to global issues*. Finland, IUFRO. <https://www.cifor.org/knowledge/publication/5093>

Stickler, C., A.E. Duchelle, D. Nepstad, J.P. Ardila. 2018. **Subnational jurisdictional approaches: policy innovation and partnerships for change.** In: Angelsen, A., C. Martius, V. De Sy, A.E. Duchelle, A.M. Larson, T.T. Pham, eds. *Transforming REDD+: Lessons and new directions*, pp. 145-160. CIFOR, Bogor, Indonesia. <https://www.cifor.org/knowledge/publication/7072>



cifor.org  
blog.cifor.org  
ForestsTreesAgroforestry.org

[a.duchelle@cgiar.org](mailto:a.duchelle@cgiar.org)



RESEARCH  
PROGRAM ON  
Forests, Land,  
and Agroforestry

